



Drug Education Policy



See also:

- Drug Education Policy: Information for Parents/Guardians & Students (Annex A)
- Drug Education Policy: Staff Guidelines (Annex B)
- Drug Education Policy: Suspected Substance Misuse Schematic (Annex C)

1 RATIONALE

- 1.1 Increasingly the range and availability of legal and illegal substances locally and nationally provides the opportunity for drug misuse. The school does not condone either the misuse of drugs and alcohol by members of the school, nor the illegal supply of those substances.
- 1.2 The school has influence in the lifestyle of its young people. We are committed to the health and safety of its members and will take action to safeguard their well being.
- 1.3 Information about drugs is readily available to young people, from the media, peers, prior learning and adults. Their knowledge and perceptions of risks may not be accurate and have an adverse effect on their decisions and action. The school acknowledges the importance of its pastoral role in the welfare of young people and through the general ethos of the school, will seek to persuade students in need of support to come forward.

2 IMPLEMENTATION

- 2.1 Implementation:
 - i. All students in school, will receive planned drug education.
 - ii. Drug Education will be within PSHCEE but can also be integrated into other curriculum areas in the context of other personal and social issues eg. homelessness, unemployment, moral and religious education, sex stereotyping and sex education.
 - iii. Drug education will be incorporated into the Just Ask (Youth Service) drop in sessions held on Monday lunchtimes.
 - iv. Staff delivering drug education should have in-service training so that they are competent, confident, skilled and familiar with current resources.
 - v. Drug education will be a balance of information which will enable students to make informed choices.
 - vi. There will be regular liaison with other schools in the partnership and local agencies, eg. police, youth services.
 - vii. The Youth Service will be aware of the PSHCEE programmes in school, just as the school will be aware of drug education initiatives by the Youth Service and Police.
 - viii. All staff, parents/guardians and governors will be aware of the planned drug education in school and in the Youth Service.

Principles and Practice

- 2.2 This policy will be directed at those substances, legal or illegal, the misuse of which may lead to adverse effects on individuals or the community.

3 DRUG EDUCATION CURRICULUM PROVISION

To be added after audit

3.1

4 CONFIDENTIALITY

- 4.1 Before talking to young people, staff should make clear to them, what degree of confidentiality can be expected [see also Confidentiality Policy (relating to students)].
- 4.2 Think carefully about where the information will be passed on to and for what purpose.
- 4.3 It is important that as a school community we avoid a situation where rumours are circulating about young people.
- 4.4 Records of suspected drug related incidents are to be passed in confidence to the Head of Year.

5 LEGAL SITUATION

- 5.1 Although there is no legal obligation for schools to contact the police about situations in which legal or illegal drugs are being consumed or sold, the Headteacher has a moral obligation to take action.
- 5.2 In deciding whether to contact the police, the Headteacher will consider:
 - The seriousness of the situation
 - What are the likely consequences for the young person and the wider school community

What to do if a young person is found in possession of a substance or if seizing a suspected drug

- 5.3 The process should be:
 - i. Contact a senior member of staff
 - ii. If confiscating a legal substance, eg. alcohol, proceed by discussing with HoY who will contact parents/guardians
 - iii. If confiscating a suspected illegal substance:
 - Store the substance in a secure place
 - Seal it and label with the date, time and place of finding with your signature on the package
 - Ensure this process is witnessed by a colleague
 - Hand the package to the police at the first opportunity (the sooner the better otherwise this becomes possession)

Actions for other situations

- 5.4 If a member of staff comes into possession of a controlled drug as 'found property' (ie. not taken from a person), there is only one course of action – it must be handed to the police. You should not store it or dispose of it.

- 5.5 If you find yourself in a situation where you suspect a young person is either involved in drug misuse or is intoxicated, see Annex C and please complete Annex D and hand to the relevant HoY.
- 5.6 If someone is suspected of dealing or supplying, the Police Community Support Officer/Police should be contacted.
- 5.7 If any suspected substance is found the Police should be contacted for advice.

Supporting the young person with suspected or known substance misuse

- 5.8 If a young person admits or is suspected of substance misuse, information on support agencies will be shared with the young person and/or the family. School is unable to offer an extensive 'support service' but we can 'sign-post' ways forward by providing contact numbers.
- 5.9 The school reserves the right to implement a repertoire of responses, to such an incident. This may include sanctions, counselling and in some cases, exclusion.

6 INFORMATION FOR PARENTS/GUARDIANS AND STUDENTS

- 6.1 The school will act with due regard to the welfare of members of the school community.
- 6.2 A drug is deemed to be any substance which alters the way in which the body functions.
- 6.3 If a person is found to be in the possession of a substance, legal or illegal, on the school premises or whilst in the care of the school eg. on visits/residential visits, the following action will be taken:
 - Although the Headteacher does not have a legal obligation to contact the police. It is his moral duty to ensure that the welfare of all members of the community is safe-guarded. The Headteacher will determine whether or not there will be police involvement.
 - If a young person is suspected of, or found to be in possession of, a substance – legal or illegal, it will be confiscated. Parents/guardians will be contacted.
 - If the young person is intoxicated or appears to be unwell, necessary first aid will be administered and parents/guardians will be contacted. Information on support agencies will be made available.
 - The school reserves the right to implement a repertoire of responses, to such an incident. This may include sanctions, counselling and in some cases, exclusion.

7 STAFF GUIDELINES

- 7.1 **All staff need to be aware of the procedure for the management of incidents including off site and residential visits.**
- 7.2 The 'Tackling drugs to build a better Britain' initiative sets out 3 aims:
 - ❶ To prevent or delay the onset of drug use
 - ❷ To prevent the escalation of drug use once experimentation has started
 - ❸ To prevent and reduce the harm associated with drug use
- 7.3 'High Risk' groups amongst young people are:
 - Excluded students

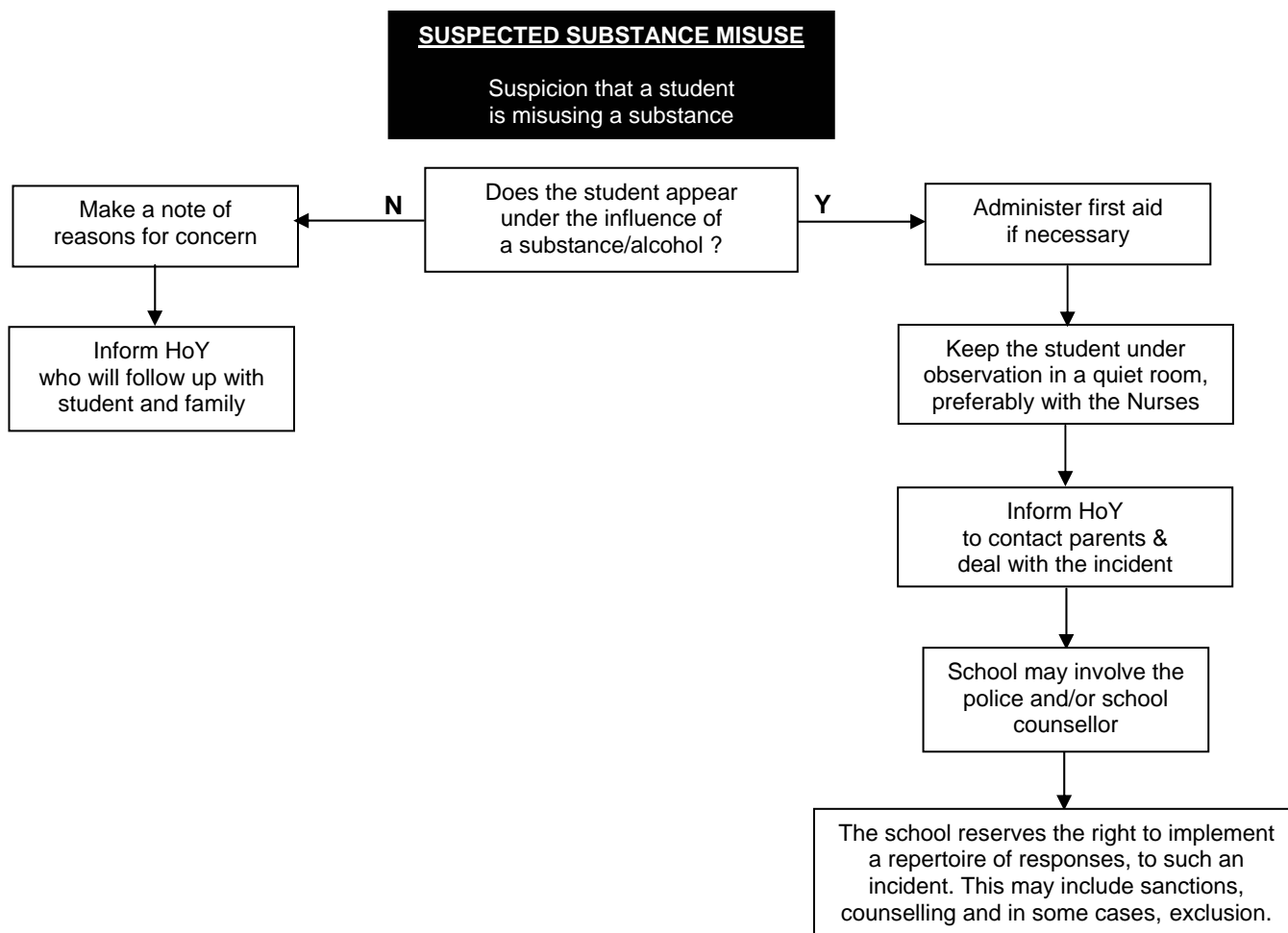
- Sufferers of mental illness
- 'Looked after' students
- Homeless
- Young offenders
- Children whose parents/guardians have a drug misuse problem
- Students who live in an area that is a high risk drug use area

7.4 Prevention Programmes are the key to reducing the numbers of young people misusing:

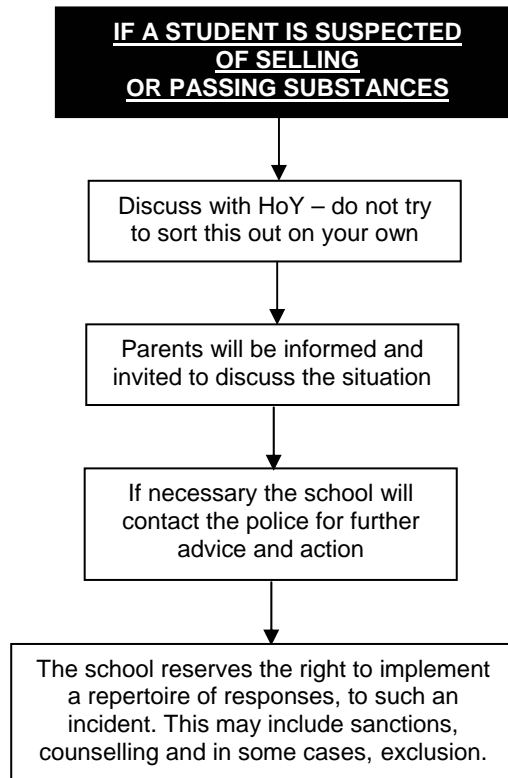
- Peer programmes are most effective
- Life skills approach – refusal skills, conflict resolution, etc
- There is not a great deal of evidence to suggest success with treatment programmes, therefore PREVENTION IS THE KEY.

8 SUSPECTED SUBSTANCE MISUSE PROCESSES AND RECORDING

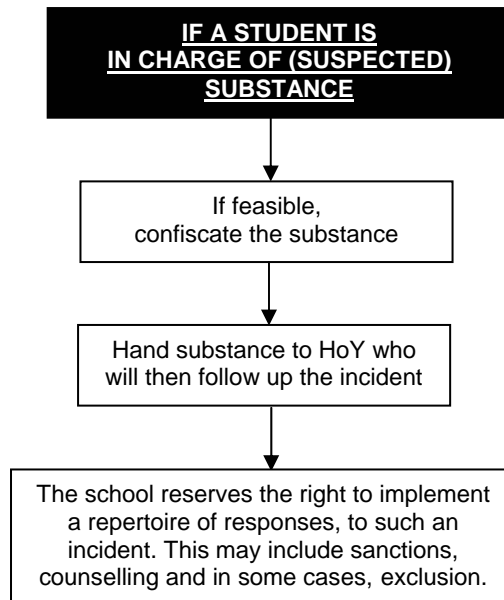
8.1 For **suspected substance misuse**:



8.2 If a student is suspected of selling or passing substances:



8.3 If a student is in charge of (suspected) substances:



8.4 It is important that a record is kept of **all drug related incidents** and a staff should complete a Suspected Drug Related Incident form.