



KING JAMES'S SCHOOL
KNARESBO ROUGH

Year 6 Transition Evening

Welcome, Parents

Purpose of the Evening

- **To meet your child's Associate Assistant Headteacher & Year Managers.**
- **To meet your child's Form Tutor and view a presentation on our support systems, values and specific Year 7 information.**
- **To have an opportunity to ask any questions.**

The Pastoral Team



Mr King
Associate Assistant Head – Year 7



Mrs Bramham
Year 7 Manager



Mrs White
Year 7 Manager



Mr McIntosh
Acting Headteacher



Mrs Holdsworth
Assistant Head



Mrs Knight
Designated Safeguarding Lead



Mrs Fearnley
SENCO



Mrs Kinsey-Stephens
Family Support Officer



Mrs Sutherland
Attendance Champion



Mrs Miles
School Nurse

Role of the Form Tutor

- To provide a daily pastoral input around progress, wellbeing, attendance and success.
- To support issues first thing so our students can be reassured prior to lessons.
- To support getting the 'basics' right e.g. uniform, equipment etc so our students can focus on their learning.

Our Shared Values...

... Are Ready, Respectful and Engaged.

These shared values:

- **Allow your child to learn**
- **Support their progress**
- **Encourage community & belonging**
- **Keep them safe**
- **Promote their wellbeing & health**



READY

Parents can support this by:

- Encouraging consistent routines
- Checking 'My Child at School' App
- Informing us of any concerns
- Promoting excellent attendance
- Celebrating success

KJS shared values of **READY**



Succeeding at KJS starts with arriving at school mentally, socially and emotionally ready.



Set no limits on what you can achieve

IN LESSONS



We show we are organised by arriving on time & having the correct equipment for lessons.



We behave by following instructions promptly & staying on task.



We communicate effectively with our teachers by completing homework on time & catching up with work.

AROUND SCHOOL



We show we are ready by wearing our uniform correctly both in school & in the community.



We behave in a resilient manner & attend school every day we can.



We communicate daily with members of staff to help us solve problems.

Attendance Percentage



Daily Lateness Equates to...



RESPECT

Parents can support this by:

- Monitoring Social Media
- Checking 'My Child at School' App
- Working relationship with staff
- Encouraging positive friendships
- Celebrating success

KJS shared values of

RESPECTFUL



“

Treat others as we would want to be treated ourselves, showing kindness and understanding.

”

Set no limits on what you can achieve

IN LESSONS



We show good listening skills by giving our full attention to others when they are speaking.



We behave in a way that embraces diversity and makes everyone feel valued & included.



We communicate with empathy and try to understand other people's perspectives before we respond.

AROUND SCHOOL



We show patience & good manners by walking around school quietly & calmly on the left.



We behave safely & take responsibility for our own actions.



We communicate politely, using appropriate language which is considerate towards others.



KING JAMES'S SCHOOL
KNARESBOROUGH

ENGAGEMENT

Parents can support this by:

- Discuss homework assignments
- Encourage extra-curricular
- Promote discussion about their day
- Attend September Expectations Eve
- Celebrating success

KJS shared values of **ENGAGED**



“

Be proud of the work we do, the people we are
and the difference we can make at KJS.

”

Set no limits on what you can achieve

IN LESSONS



We show aspiration by embracing opportunities to learn & challenging ourselves.



We behave by being motivated to learn, resilient and having a positive mindset.



We communicate by taking part positively in class discussions & responding to feedback.

AROUND SCHOOL



We show commitment through our involvement in opportunities outside of the classroom.



We behave as role models to others by always meeting the KJS Values



We communicate positively by listening attentively & responding thoughtfully.



Uniform

We are proud of our Uniform and tradition

The Uniform provides flexibility and choice for our students

Any combination is allowed but must have tartan either with the tie or the kilt

We expect our students to wear the uniform with pride as it promotes the right mindset

In Year 7 & 8, pupils wear **Red** tartan

Please check your child's uniform on a morning before they leave for school.



Mobile Phones

Mobile phones are considered a 'banned item' in most schools. At KJS, we do not allow pupils to use/ their phone at any point in the school day.

We recognise for safety reasons you may wish for your child to have a phone with them during the school day.

Phones must be switched off and in bags as they enter the school gates. It can be turned on again at 3:15pm

Please do not ask your child to contact you on their phone during the school day. Call reception instead and we will facilitate this

If a student is seen using a mobile phone during the day it may be confiscated. Pupils can collect from reception at the end of the day

Enrichment at KJS

Your child will receive an excellent enrichment programme at our school

Please encourage them to be 'Engaged' in as many aspects of this as possible

**Forward notice – Christmas Panto
Trip 17th December to York
Theatre Royal**

**ALL year 7 students are invited.
Details to follow in September
(oh yes, they will...)**

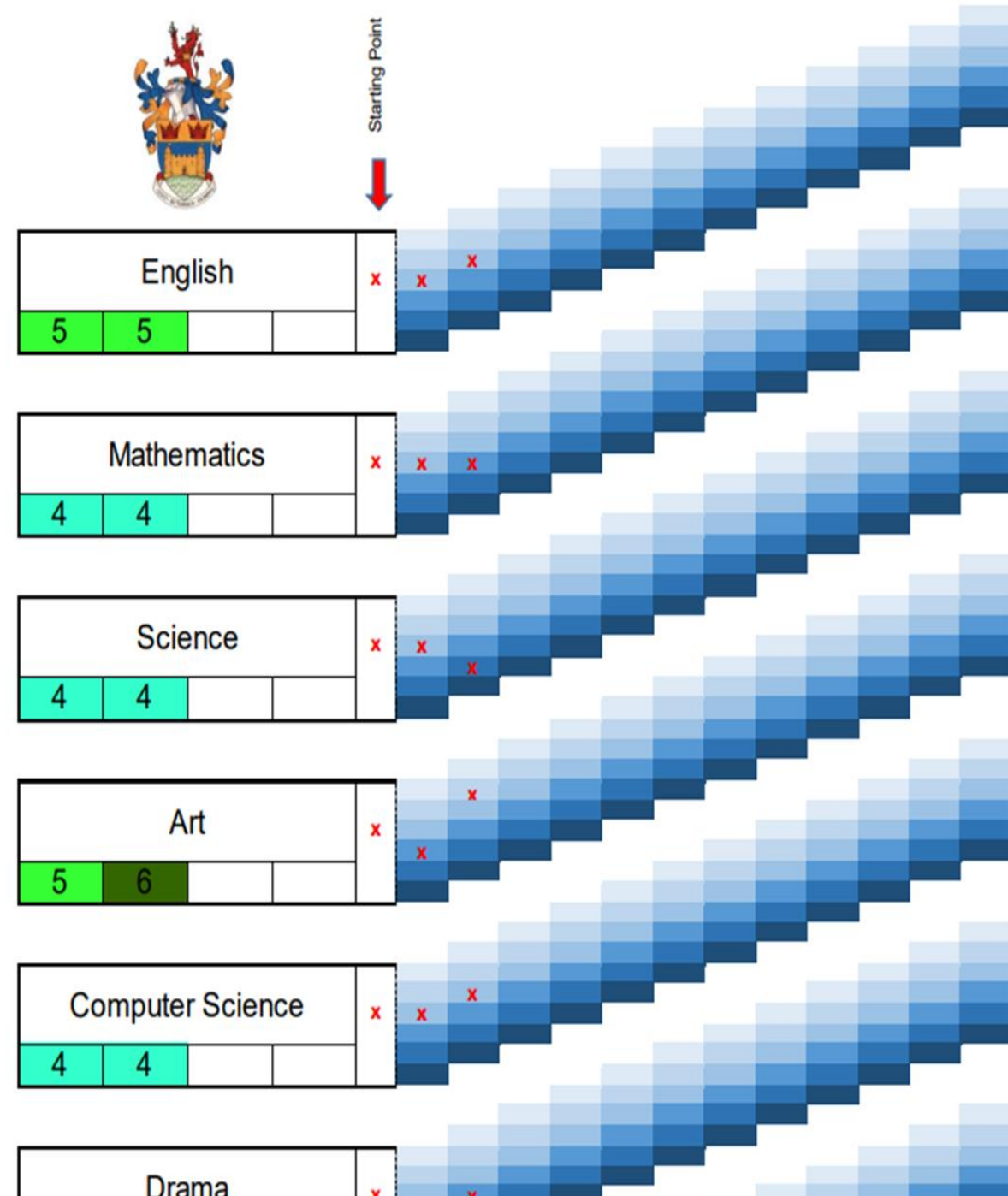


KJS Curriculum

At KS3, our curriculum follows the 'national offer' to pupils.

Pupils will 'Engage' in a range of core subjects e.g. English/ Maths/ Science as well as future option subjects including humanities, design, sport, performing arts and computing.

We 'report' to parents three times per year the progress of our students. We will inform you of their levels of 'Ready, Respect, Engaged' as well as their academic progress

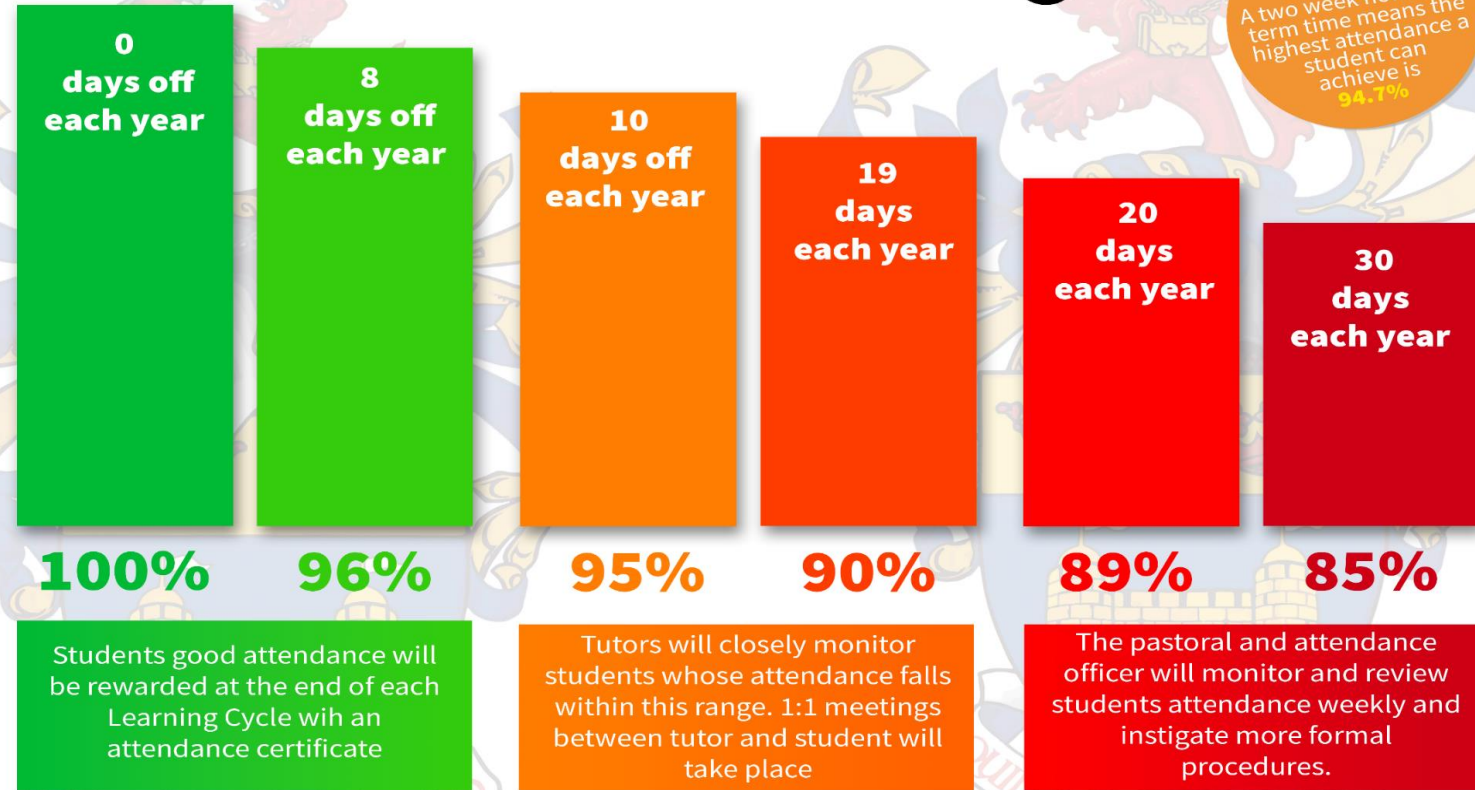


Attendance

Good attendance is crucial to academic progress, supporting mental health through routines and peer interaction and 'Engagement' in school life.

90-95% looks great in a test, but this equates to 10-19 days off in a year, which can equal a grade lower at GCSE level.

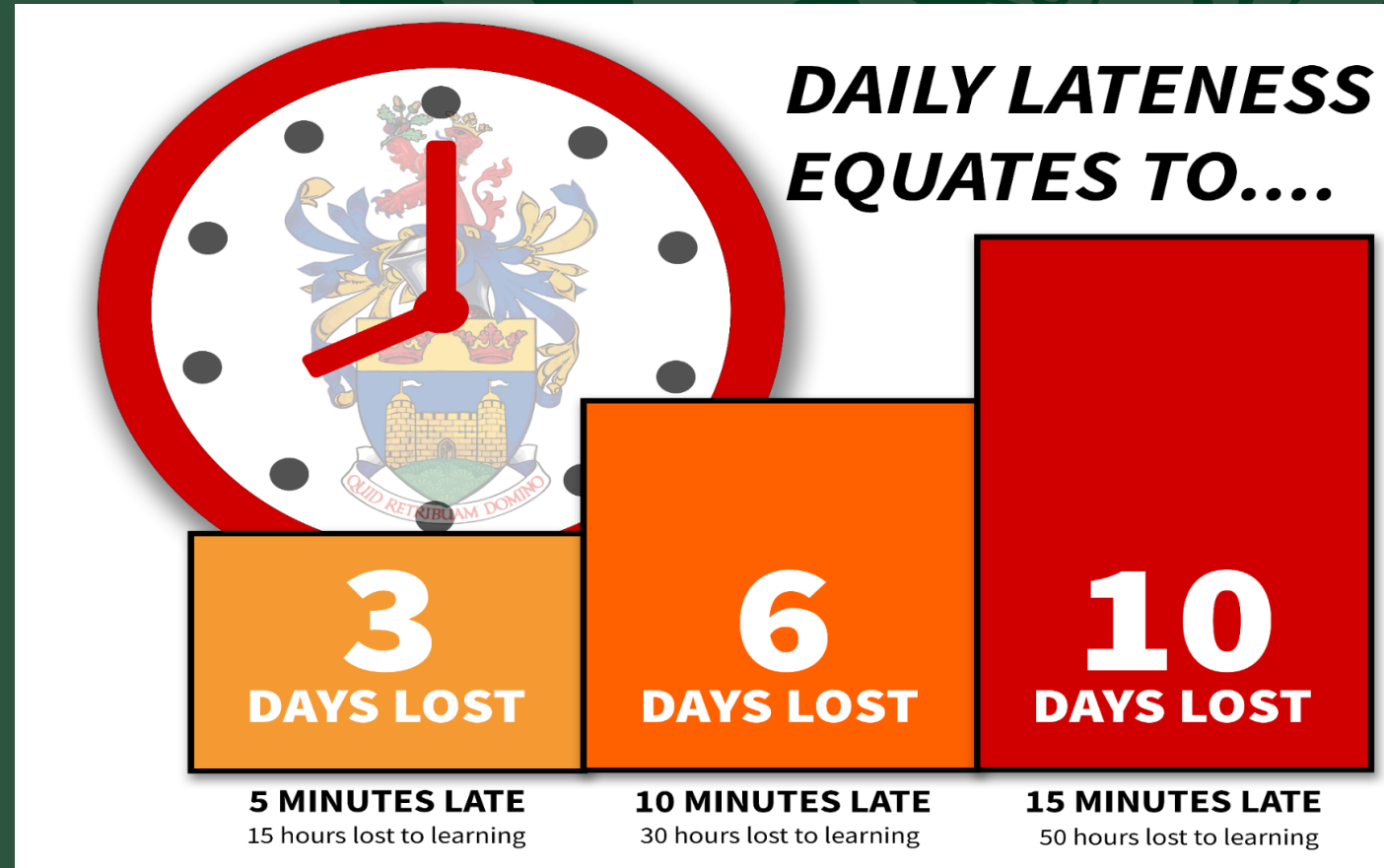
Attendance Percentage



Punctuality

Punctuality is also vital to ensuring pupils receive their daily pastoral input through form, are registered on time, and allows pupils to be 'Ready' for their lesson.

Having consistent AM and PM routines as well as reducing screen time on an evening will have a positive impact.



Next Steps & Parental Communication

Website updates over the final two weeks:

- Parent support booklet
- A summer message to our new Year 7 cohort
- Key dates and times for your calendar

**Please send any further queries to the email below.
y6transition@king-james.co.uk**

September
Expectations
Evening



October
Pastoral Parents
Evening (Tutor Led)



Nov, March, June
Learning Cycle
Reports



June
Curriculum Parents
Evening

Thank you for your attendance this evening. We hope this has been useful.

If you have any questions, please stay and speak to your child's form tutor.

We look forward to welcoming your child into Year 7 in September.

Have a lovely summer.

